

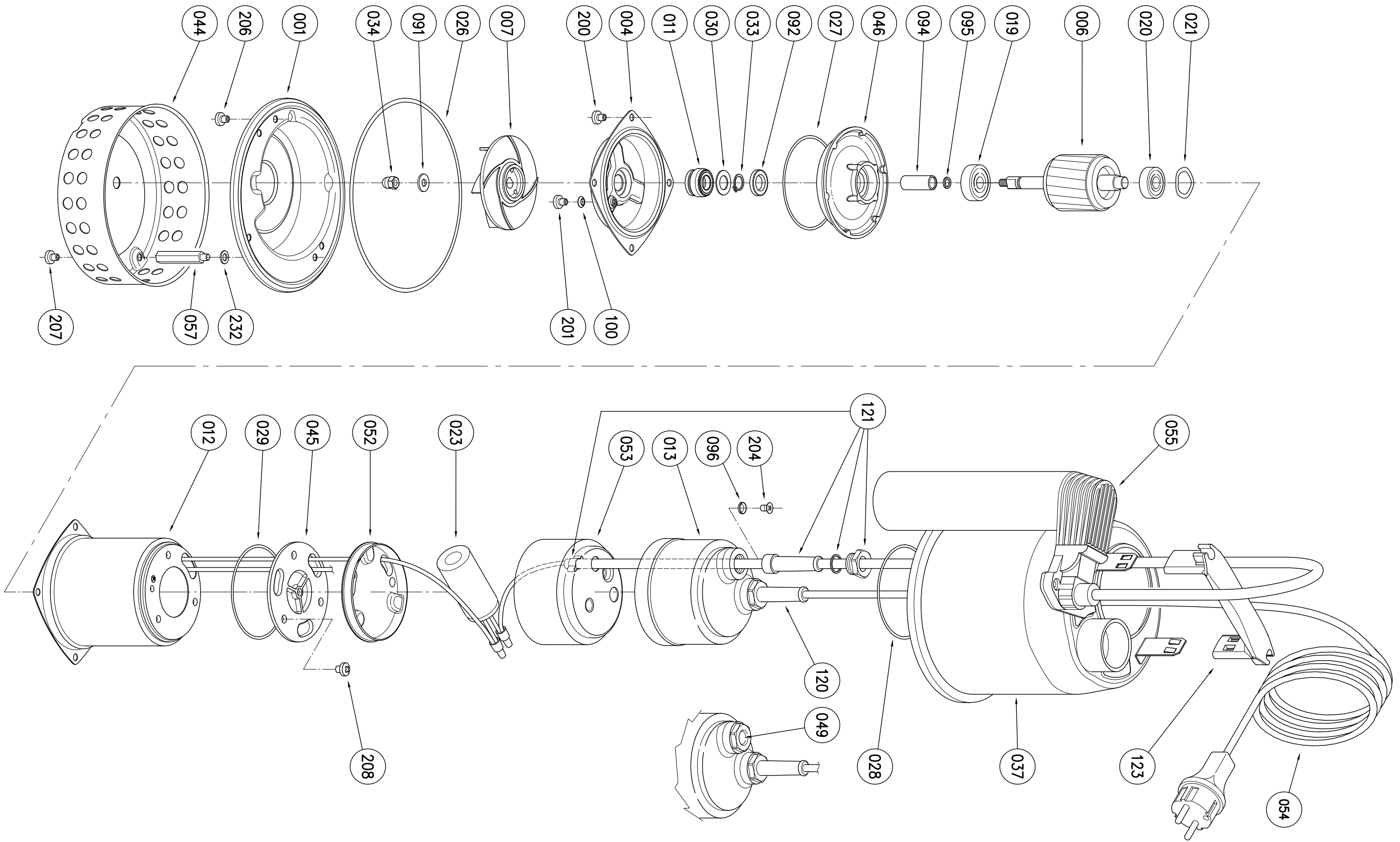
REV.	DESCRIZIONE DELLA MODIFICA	N° MOD.	DIS.	CONTR.	R&D	NORM.	DATA




DIS. PERAZZOLO
 NORM.
 DATA 04.08.06

DESCRIZIONE
 BEST ONE - ONE VOX
 OPTIMA

N° DISEGNO
01420
 REV



REV.	DESCRIZIONE DELLA MODIFICA	N° MOD.	DIS.	CONTR.	R&D	NORM.	DATA		DIS. PERAZZOLO	DESCRIZIONE	N° DISEGNO
											BEST ONE - OPTIMA MS
									DATA 04.08.06		REV

Pezzi di ricambio
elettropompe

Spare parts
pumps

OPTIMA

Pos.	Denominazione	Part name	OPTIMA M	OPTIMA MA	OPTIMA MS		
			Dwg no.01420	Dwg no.01420	Dwg no.01426		
001	VOLUTA	Suction cover	241445017	241445017	241445017		
004	DISCO PORTA TENUTA	Casing cover	251438055	251438055	251438055		
006	ALBERO ROTORE	Shaft with rotor	275412012	275412012	275412012		
007	GIRANTE	Impeller	342551003	342551003	342551003		
011	TENUTA BT FIS. PF	Mechanical seal	360408412	360408412	360408412		
011	TENUTA BT PR/AR	Mechanical seal	360406112	360406112	360406112		
012	CASSA STATORE	Motor frame with stator	257930049	257930049	257930049		
013	COPERCHIO MOTORE	Motor cover	342525110	342525111	342525111		
019	CUSCINETTO 6200 ZZ	Lower ball bearing	360316200	360316200	360316200		
020	CUSCINETTO 6000 ZZ	Upper ball bearing	360316000	360316000	360316000		
021	ANELLO COMPENSAT	Adjusting ring	360600026	360600026	360600026		
023	CONDENS. MF 8 450V	Capacitor	361401080	361401080	361401080		
026	ANELLO OR 3,1X159,3	O-Ring	360917914	360917914	360917914		
027	ANELLO OR 4350 D.88	O-Ring	360938850	360938850	360938850		
028	ANELLO OR 3300 D.75	O-Ring	360927587	360927587	360927587		
029	ANELLO OR 3300 D.75	O-Ring	360927587	360927587	360927587		
030	RONDELLA SPALLAM.	Washer	360676024	360676024	360676024		
033	ANELLO SEEGER D.12	Seeger ring	360600009	360600009	360600009		
034	DADO CALOT. M 6	Impeller nut	363351000	363351000	363351000		
037	CAMICIA ESTERNA	Pump casing	251427330	251427330	251427333		
044	FILTRO	Strainer	248446019	248446019	248446019		
045	SUPPORTO CUSCINETTO	Upper bearing housing	251481036	251481036	251481036		
046	SUPPORTO CUSCIN.INF	Lower bearing housing	251481038	251481038	251481038		
049	TAPPO CHIUSURA M18	Plug	372592000				
052	BASE SCATOLA MORS.	Terminal insulating base	372524049	372524049	372524049		

Data di creaz./
First release
september 06

(n)= Quantità per pompa / Quantity for pump

1/2



EBARA PUMPS EUROPE S.p.A.

Pezzi di ricambio
elettropompe

Spare parts
pumps

OPTIMA

Pos.	Denominazione	Part name	OPTIMA M	OPTIMA MA	OPTIMA MS		
			Dwg no.01420	Dwg no.01420	Dwg no.01426		
054	CAVO H05RN-F 3G0,75	Power cable	367900009	367900009	367900009		
055	GALLEGG.KEY C/CAVO	Switch		365231002	365200070		
057	DISTANZIALE FILTRO	Spacer	375434130 (2)	375434130 (2)	375434130 (2)		
091	RONDELLA D.6,2X15	Washer	360676033	360676033	360676033		
092	ANELLO TEN.BAD 12X2	Lip seal	360601422	360601422	360601422		
094	DISTANZIALE GIRANTE	Shaft sleeve	375434129	375434129	375434129		
095	ANELLO OR 2025 D.6,0	O-Ring	360916070	360916070	360916070		
096	ANELLO OR 2025 D.6,0	O-Ring	360916070	360916070	360916070		
100	ANELLO OR 2018 D.4,4	O-Ring	360914480	360914480	360914480		
120	GR.PRESSACAVO ALIM.	Cable connector set-power	352665039	352665039	352665039		
121	GR.PRESSACAVO GALL.	Cable connector set-float		352665040	352665040		
123	MANIGLIA	Handle	251460027	251460027	251460027		
200	VITE TCC M 5X6	Screw	369640002 (4)	369640002 (4)	369640002 (4)		
201	VITE TCC M 5X6	Screw	369640002	369640002	369640002		
204	VITE TSP M 5X8	Screw	369640005	369640005	369640005		
206	VITE TCC M 5X6	Screw	369640002 (3)	369640002 (3)	369640002 (3)		
207	VITE TCC M 5X6	Screw	369640002 (2)	369640002 (2)	369640002 (2)		
208	VITE TCC M 5X6	Screw	369640002 (3)	369640002 (3)	369640002 (3)		
232	RONDELLA PIANA	Washer	360676003 (2)	360676003 (2)	360676003 (2)		

Data di creaz./
First release
september 06

(n)= Quantità per pompa / Quantity for pump

2/2



EBARA PUMPS EUROPE S.p.A.